



AML/J

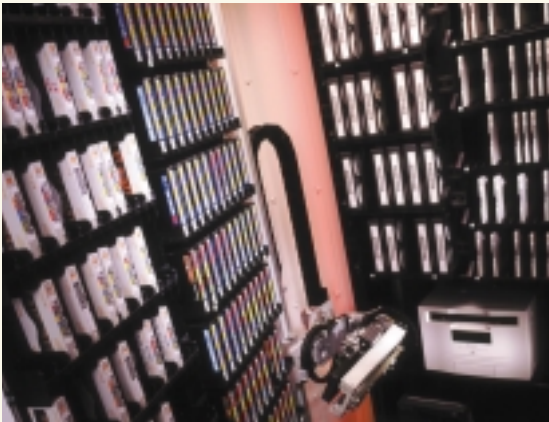
*Automated
Mixed Media
Library*

adic

AML/J

The Right Solution For Your Data Management

The AML/J automated storage library offers a unique combination of solutions for your large-system midrange data storage needs.



AML libraries support more than a dozen media types, including all leading tape formats (3590, 9840, DLTape, AIT, DTF, etc), non-digital recorders (Betacam, for example), even audio CDs and optical disks.

- ➔ The AML/J grows economically with your data using a unique barrier-free expansion system that eliminates pass-through ports.
- ➔ It protects your organization's IT investment by providing the industry's widest choice of storage technologies, including simultaneous use of different media, and it offers an easy migration path to new technologies.
- ➔ It offers an integrated multi-host architecture that makes it easy to share the library between different applications and operating systems.
- ➔ And finally, the AML/J provides continuous data availability through a combination of industry-leading reliability and a global network of integration, logistics, and field support experts.

The Right Solution For Changing Technology: Mixing And Changing Media Is Easy

Recording technologies are evolving so rapidly that it's difficult to predict which ones will meet your future needs. ADIC AML libraries are the first automated storage products to let you take advantage of this change. They support more than a dozen technologies today, and they are designed for easy field integration of new drive technologies. Older and newer technology can easily co-exist since AML libraries support concurrent operation of different technologies in the same library. The AML multi-media support means:

- You can pick the right technology for the information management job at hand.
- You can easily convert your library to next-generation media technologies.
- And you can use a single library to support more than one drive type. No need to buy an additional library!



The Right Solution For Data Growth: True Scalability Within a Single Library

With conventional storage libraries, scalability means that IT managers are forced to buy multiple smaller units with expensive extra robotics and cumbersome pass-through ports—or an entire silo now, even if they only need part of its capacity today. The AML/J system of expansion modules offers a fundamentally different approach. It grows easily and economically in direct response to your data growth—from as few as 2 drives and 400 cartridges up to as many as 226 drives and 7500 cartridges. With the AML/J's unique barrier-free expansion, the entire library is served by a continuous, integrated robotics system that completely eliminates the delays and reliability penalties caused by pass-through ports. With the AML/J, you have low-cost incremental growth combined with the highest levels of performance and reliability.

The Right Solution for Data Availability: Global Integration and Support Services

Continuous data availability is crucial for enterprise-class data storage. ADIC recognizes that total data protection requires an integrated approach that includes both product design and an experienced and committed service and support team. We begin with a design that minimizes moving parts, with uncompromising quality and reliability coupled with redundancy in key hardware elements. Then we incorporate an integration services team, available all over the world, that understands the complex nature of your storage needs and the ways that effective storage can serve your organization. Finally, we add one of the industry's premier global support and logistics teams, one that provides service in more than 40 countries worldwide.

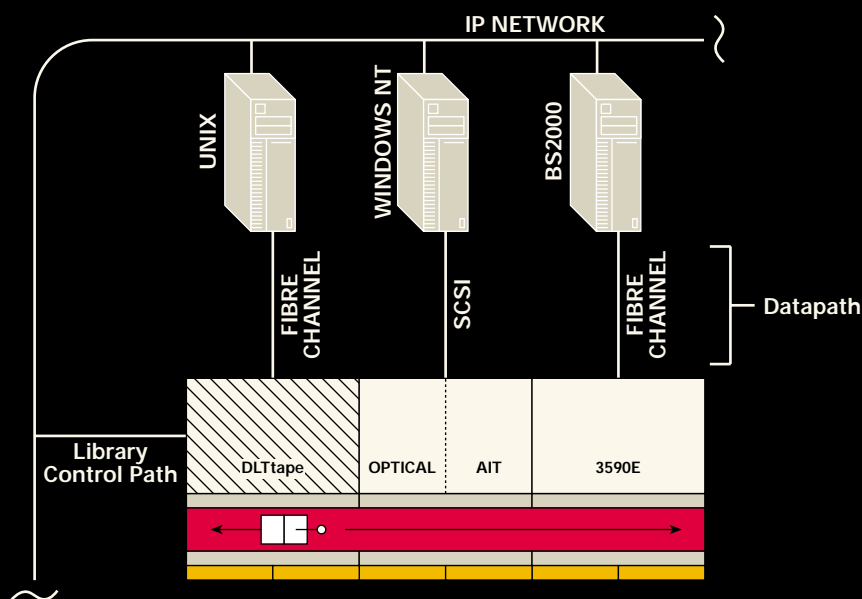
The Right Solution for Enterprise Information: Sharing Storage Across Applications

Information has become the most valuable asset of the contemporary organization, one that needs to be shared throughout the enterprise. With the AML/J's integrated multi-host architecture, your storage library can play a central role in managing all of your data. Multi-host architecture lets your AML/J become a shared network resource that protects and organizes your information across all of your network applications and operating systems, including Fibre Channel Storage Area Networks (SANs). It also lets you partition your library into user-defined volumes, automate media management, and support remote monitoring and operation.



The AML/J scales easily with your data, while maintaining the performance, reliability, and economy of a single integrated library. Up to nine Expansion Modules can be attached to the Base Module without pass-through ports.

AML/J Multi-Host Architecture



AML/J Drive and Media Support

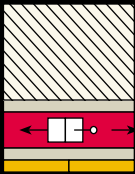
Drive	Native Media Capacity GB	Cartridge Range		System Capacity		Maximum Drives
		from	to	from	to	
3590E	20.0	320	5,000	6.4	100.0 TB	up to 76
DLT8000	40.0	324	4,536	13.0	181.4 TB	up to 226
DLT7000	35.0	324	4,536	11.3	158.8 TB	up to 226
AIT2	50.0	504	7,560	25.2	378.0 TB	up to 226
9840	20.0	300	4,980	6.0	99.6 TB	up to 114
LTO Ultrium	100.0	320	5,000	32.0	500.0 TB	up to 226
SD-3 (RedWood)	50.0	320	5,000	16.0	250.0 TB	up to 76
3480/90/E	0.8	320	5,000	0.3	4.0 TB	up to 76
M8100	10.0	320	5,000	3.2	50.0 TB	up to 114
8mm (Mammoth)	20.0	504	7,560	10.1	151.2 TB	up to 114
Optical Disk	5.2	264	3,828	1.4	19.9 TB	up to 114
CD-ROM (caddy)	0.7	420	5,820	0.3	3.8 TB	up to 226
DST Medium	300.0	72	1,152	21.6	345.6 TB	up to 38
DST Small	150.0	108	1,836	16.2	275.4 TB	up to 38
DTF Large	200.0	96	1,536	19.2	307.2 TB	up to 38
DTF Small	60.0	176	2,768	10.6	166.1 TB	up to 38
4mm	12.0	484	6,820	5.8	81.8 TB	up to 171
VHS	14.5	180	2,448	2.6	35.5 TB	up to 57
Betacam Large	110 min	96	1,536	176.0	2,816.0 hours	up to 57
Betacam Small	36 min	176	2,768	105.6	1,660.8 hours	up to 57

Note: Minimum configuration assumes Base Module with import/export unit and maximum drive count. Maximum configuration assumes Base Module plus nine Expansion Modules filled with media.

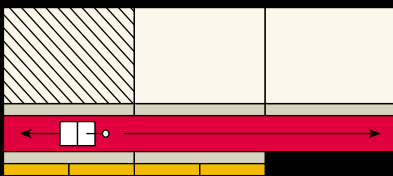


AML/J Configurations

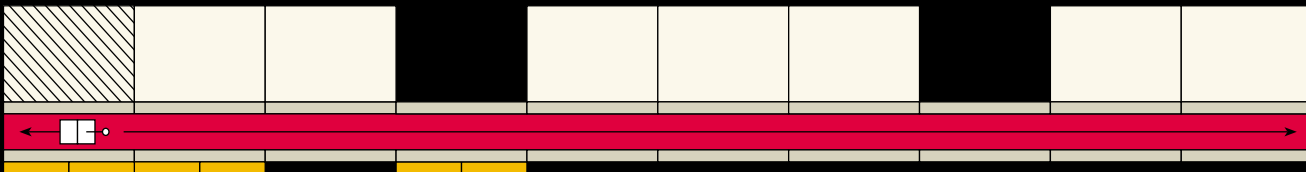
SAMPLE CONFIGURATIONS



System 1
Base Module



System 2
Base Module and Two Drive
Expansion Modules

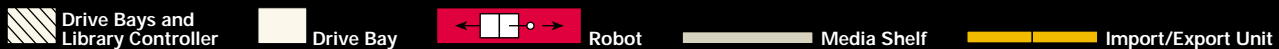


System 3
Base Module, Seven Drive Expansion Modules,
and Two Storage Expansion Modules

The AML/J grows with your data through a barrier-free expansion system that never uses pass-through ports. The Base Module houses drives, media, an import/export unit, and the library controller. The library can be expanded with up to nine Expansion Modules, each housing media alone (Storage Expansion Module) or a combination of media and drives (Drive Expansion Module). Additional two-magazine import/export units may be added to any module to provide automated media transfer or dedicated storage. The single robot and media picker supports concurrent operation of multiple media types and can be easily upgraded in the field to support new drive and media technology.

** Drive and media capacity will vary depending on number and type of drives and number of cabinets. Contact your ADIC representative for complete configuration options.*

LEGEND



SAMPLE CAPACITY RANGE PER BASE MODULE *			SAMPLE CAPACITY RANGE PER EXPANSION MODULE *		
	DRIVES	MEDIA		DRIVES	MEDIA
3590	0-6	up to 520	3590	0-8	up to 520
AIT	0-10	up to 784	AIT	0-24	up to 784
DLTtape	0-10	up to 468	DLTtape	0-24	up to 468
MO (5.25")	0-8	up to 396	MO (5.25")	0-12	up to 396
Betacam Large	0-2	up to 160	Betacam Large	0-8	up to 160

AML/J

Product		Physical	
Connectivity:	Multiple, heterogeneous servers via the AML Management Unit	Base Module:	42.7 (W) x 63.4 (D) x 76.8 (H) inches 1085 (W) x 1610 (D) x 1950 (H) mm 777 lbs/353 kg without drives/media
Configurability		Storage Expansion Module (no drives):	29.5 (W) x 31.3 (D) x 76.8 (H) inches 750 (W) x 795 (D) x 1950 (H) mm 253 lbs/115 kg without drives/media
Support for:	Half-inch (3480, 3490, 3590, 9840, M8100, SD-3 RedWood) DST small DST medium DLT LTO CD-ROM (Caddy) 4mm (DDS) 8mm AIT VHS Betacam small Betacam large DTF small DTF large Optical Disk 5.2 Optical Disk Reflection	Drive Expansion Module (with drive shelves):	29.5 (W) x 63.4 (D) x 76.8 (H) inches 750 (W) x 1610 (D) x 1950 (H) mm 451 lbs/205 kg without drives/media
Performance:	Up to 175 exchanges per hour Access time less than 10 seconds	Electrical Specifications	
Reliability:	1,000,000 MCBF (Mean Cycles Between Failure) Automatic calibration routines Two-hour MTTR (Mean Time To Repair)	North America:	120 volts, single phase, 0.7KVA
		Europe:	230 volts, single phase
		Operating Environment	
		Temperature:	60°-90°F (16°- 32°C)
		Humidity:	15% minimum to 75% maximum
		Regulatory	
		Safety	
		North America:	UL: UL1950-ITE CSA: C22.2 #950
		Europe:	TUV: EN60950
		EMC-EMI	
		North America:	FCC, Part 15: Class A
		Europe:	CE Class A



For more information contact:

Unylogix Technologies

Phone: 514.253.5200

E-mail: get-info@unylogix.com

Web: www.unylogix.com

ABOUT ADIC

With more than 55,000 automated tape libraries installed and a suite of innovative software solutions and Storage Area Networking (SAN) products, ADIC is a leading global provider in the growing market to manage and protect information for computer networks. Marketed under ADIC and ADIC/GRAU brands and the brands of OEM partners, including Dell, Fujitsu Siemens, IBM, Exabyte and Unisys, the Company's automated tape libraries are available with DLTtape, DST, half-inch, AIT, and 4mm tape technologies, and are supported by leading backup and storage management software products for Windows NT®, UNIX, and mainframe operating systems. The Company's own storage management software provides users shared access to network data. A pioneer in Storage Area Networks, ADIC's Open SAN Solutions combine open-system SAN hardware and software with installation services and single-call support.

 www.adic.com