



Orion Series

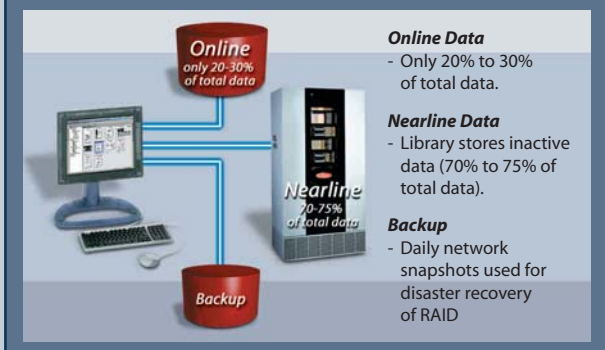
5.25 inch Magneto Optical Storage Libraries

www.disc-storage.com

Automated Solutions for Enterprise Storage

DISC is a worldwide leader in the development and production of NearLine storage devices. We provide a complete range of storage solutions built around the most reliable storage technologies ever created. Offering capacities from 182 GB up to 10 TB, DISC solutions add storage to networks for a fraction of the total cost of RAID.

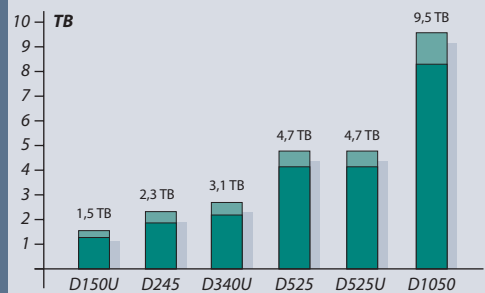
DISC NearLine Storage "Orion Series"



DISC's Orion series has been designed to provide the reliability, performance and capacity needed for mission critical storage applications. With capacities up to 10 TB, the Orion Series represents the highest capacity and performance available from DISC.

Six product configurations offer the enterprise level storage capacities that today's users demand. The high-speed robotics, integrated barcode management system, and dual picker design of the Orion Series deliver industry-leading system reliability. With support for up to 32 drives, the Orion Series provides unequalled data availability.

Capacities of Orion Series



Reliable Systems for high data availability

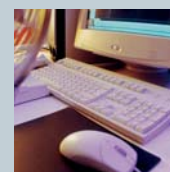
Orion Series models are designed to meet the demands of today's active network environments. DISC's ruggedized modular architecture includes redundant, hot swappable power supplies and delivers over 2 million load cycles. Our airtight cabinet housing with double-filtered positive airflow system provides an ideal environment for the storage of your most important data assets.

The Dynamic Automatic Alignment (DAA) system and embedded diagnostics for error detection and correction add to the dependability of the Orion Series storage solutions. These ensure continuous system uptime by conducting regular alignment verification and correction.

Flexibility to meet growing demands for data capacity

The Orion Series offers a broad range of data storage capacities and drive configurations. The modular design allows the Orion Series to be field upgraded with drives and/or media providing customers maximum flexibility as their storage requirements grow.

All Orion Series models can be integrated with SAN, NAS or direct attach configurations, guaranteeing seamless connectivity across multiple network environments.





The DISC Orion Series:

Six Models offer NearLine storage and access from 1.1 to over 10 TB of data.



Orion D150U

The D150U is the entry-level model of the Orion Series and offers the full range of DISC performance, features and quality. With support for up to 8 drives and 1.6 TB of storage, D150U is the ideal product for entry-level applications. The D150U can be field upgraded to the D245 as the need for storage grows.

- All ORION series features
- DISC 3 x 9 SL Chassis
- 140 to 170 Slots
- 1.2 TB to 1.6 TB
- 2 to 8 drives
- Upgradeable to D245

Orion D245

The D245 with up to 2.3 TB of data storage has the same commitment to quality as all DISC Orion Series models. With support for up to 12 drives, users can access data quickly and easily.

- All ORION series features
- DISC 3 x 9 SL Chassis
- 205 to 255 Slots
- 1.86 TB to 2.3 TB
- 2 to 12 drives

Orion D340U

The D340U offers a cost effective solution that can provide up to 3.2 TB of storage. The design of the D340U allows it to offer from 2 to 12 drives for optimum performance. The D340U can be field upgraded to a D525, providing additional capacity and performance as required.

- All ORION series features
- DISC 6 x 9 SL Chassis
- 300 to 350 Slots
- 2.7 TB to 3.2 TB
- 2 to 12 drives
- Upgradeable to D525

Orion D525

The D525 provides the same high capacity and performance of all Orion Series models in a SlimLine version of the D1050. With storage up to 5 terabytes, the D525 allows up to 16 users to access data simultaneously, providing a safe, secure archive for all of their mission critical data.

- All ORION series features
- DISC 6 x 9 SL Chassis
- 455 to 525 Slots
- 4.1 TB to 4.8TB
- 2 to 16 drives

Orion D525U

The D525U provides enterprise class storage with room to grow. With support for up to 16 drives and 525 pieces of media the D525U is a 4.8 TB storage solution that is expandable to 10 TB.

- All ORION series features
- DISC 6 x 9 DS Chassis
- 455 to 525 Slots
- 4.1 TB to 4.8TB
- 2 to 16 drives
- Upgradeable to D1050

Orion D1050

The D1050 represents the pinnacle of DISC performance and capacity providing fast access to almost 10 TB of data. With support for 32 drives the Orion D1050 allows up to 145 GB of data to be "under the read head" at one time. The dual cabinet design of the D1050 can also allow customers to set up a mirrored storage system of up to 5 TB within the same unit.

- All ORION series features
- DISC 6 x 9 DS Chassis
- 910 to 1050 Slots
- 8.2 TB to 9.5TB
- 4 to 32 drives
- Dual changer mechanism

Orion Series

Technical Data



Features:

- Latest MO drive technology, 14x drives and 9.1 GB media
- Ruggedized Modular Architecture
- Dual Cartridge Picker
- Intuitive user interface with password protected security scheme
- Barcode Media Management
- Built in diagnostics for all control modules
- Airtight cabinet housing with double filtered positive airflow.
- Redundant, hot swappable auto sensing power supply
- Multiple SCSI busses, with SCSI-2, single ended, or LVD interface.
- SAN and NAS configurations available
- Direct Attach Software available

Reliability

- MSBF over 2 million cycles
- MTTR 30 minutes
- MTBF (POH) 40,000 hours (library)
- 48 volt distributed power system
- Dynamic Automatic Alignment (DAA) system

System	Specifications		
Power Requirements	Auto Sensing 100 - 120 VAC, 12A or 200 - 240 VAC, 12A 50/60Hz		
Humidity	5% to 95% non-condensing		
Shock and Vibration	Limited by drive specifications		
Product Certification	Safety: UL1950, CSA950, EN60950, TUV Emission: FCC Class A, 1375 Class A, EN 55022 Class A, CE Mark		
Environmental Specifications Temperature	Operating: 0° C to 45° C Non-operating: -20° C to +85° C Gradient (per drive specifications)		
Spacing and Airflow Requirements	Normal airflow during operation: 6 inches Service Access: 3 feet		
Compatibility	Extensive network of independent software vendors		
Dimensions HxWxD	inches	(mm)	lbs/kg
D150U	74.5" x 37.5" x 26"	(1,866 x 950 x 650)	800/363
D245	74.5" x 37.5" x 26"	(1,866 x 950 x 650)	800/363
D340U	74.5" x 55" x 26"	(1,866 x 1,400 x 650)	800/363
D525	74.5" x 55" x 26"	(1,866 x 1,400 x 650)	1,000/454
D525U	74.5" x 55" x 36"	(1,866 x 1,400 x 900)	1,000/454
D1050	74.5" x 55" x 36"	(1,866 x 1,400 x 900)	1,000/454
Model	# of Slots	# of Drives	Capacity GB
D150U	140 to 170	2 to 8	1274 to 1547
D245	205 to 255	2 to 12	1866 to 2321
D340U	300 to 350	2 to 12	2730 to 3185
D525	455 to 525	2 to 16	4141 to 4778
D525U	455 to 525	2 to 16	4141 to 4778
D1050	910 to 1050	4 to 32	8281 to 9555



For more information contact:

Unylogix Technologies Inc.

Tel: (514) 253-5200

email: info@unylogix.com

web site: www.unylogix.com